

AFTER-SCHOOL STRINGS

STUDENT & FAMILY
HANDBOOK

SEPTEMBER 2023

Table of Contents

Welcome.....	3
Mission & History.....	4
Values.....	5
Program Description.....	6
Teacher & Staff Profiles.....	7
Teacher & Staff Contact Information.....	11
Student & Caregiver Expectations.....	12
Class Dates.....	14
Instrument Care.....	17
Practice Tips.....	19
About the Mentorship Program.....	21
Palaver Strings Concerts.....	22
Program Applications & Sliding Scale(English, Portuguese, French).....	24
Financial Aid.....	32

Welcome to the Palaver Music Center After-School Strings Program!

Welcome! All of us in Palaver Strings are incredibly happy and excited that you have decided to join After-School Strings - Palaver's core educational program.

We love music's power to bring people together, share stories and create conversations. In addition, we believe learning music early allows children to express themselves creatively while also building life skills such as resiliency, listening, courage and much more. It's important to know that you are surrounded by a community who is here to support you and your child's musical journey.

Sincerely,

Matthew

Cellist & Managing Director of Education

Mission & History

Palaver Strings is a musician-led string ensemble and nonprofit organization based in Portland, ME. For ten years, our mission has been to strengthen and inspire community through music. In our musician-led model, Palaver's musicians share artistic and administrative leadership, guided by a passion for engaging new audiences, addressing social justice issues, and amplifying underrepresented voices.

Palaver Strings presents a full series of live concerts each year, featuring diverse musical programming, community partnerships, and world-class collaborators from many genres and artistic media. Palaver has toured nationally, performing at venues from the Kennedy Center to National Sawdust, with a special focus on our home state of Maine. The ensemble has enjoyed residencies at Rockport Music, Boston Center for the Arts, Bay Chamber Concerts, the Brattleboro Music Center, and Longy School of Music, where the ensemble performs, offers master classes and workshops, and teaches graduate courses on music and community engagement. Palaver's recent album *Ready or Not* (Azica Records, 2022) has received acclaim from publications such as The Guardian and BBC Music Magazine. In 2023, Palaver Strings is proud to join the roster of Ariel Artists.

Equally committed to education, Palaver launched the Palaver Music Center in 2019, which now serves hundreds of students per year at our downtown Portland teaching space. Our programs include Early Childhood Music, private string instrument lessons, and group classes for students in grades K-4.

"Palaver" comes from the term "palaver hut," a traditional setting for discussion and conflict resolution found in Liberia and other West African countries. Some of our first performances as an ensemble were benefit concerts for the Liberian Education Fund, an organization co-founded by our Managing Director, Maya French. Maya and her peers worked together to raise funds for high school and college scholarships for Liberian students, traveling to Liberia several times and creating powerful personal connections that continue to this day. Through these friendships, Maya learned about the tradition of the palaver hut, and we were all inspired by the concept as we built our own container for creative collaboration. While our organization operates in a very different cultural context, the concept of the palaver hut still resonates strongly with our vision. When Maya proposed the name "Palaver Strings," our friends in Liberia gave us their blessing, and we continue to communicate about what it means to claim this name. In an age of appropriation and commodification of indigenous cultural practices, we hope to honor our early collaboration with LEF. It's an important part of our story, and catalyzed our own collaboration for years to come.



Values

We recognize that classical music has a history of exclusion and alienation, and has tended to uphold rather than confront systemic inequalities. Through the Palaver Music Center, we hope to change the face of classical music in our local community, taking concrete steps to overcome financial, logistical, and cultural barriers to participation.

Palaver Strings affirms that Black lives matter and acknowledges that systemic racism continues to affect our community. Our mission is to strengthen and inspire community through music, and we believe that true community is not possible without sustained work to dismantle these oppressive structures that can separate us and impair the development of the community we seek. As performers, educators, and collaborators, we strive to create a culture of equity, inclusion, and accountability. One necessary part of this work is examining classical music's legacy of exclusion and white supremacy, and the ways in which this legacy shapes our playing, decision-making, and ways of being together. We will coordinate that effort with a continuing awareness of the effects that exclusion and white supremacy have on our day-to-day lives. Our work cannot end here; it must continue with concrete action to disrupt these systems and practices.

Our hope is that all who enroll and participate in Palaver Strings programs will share and uphold these values as we work to create a more equitable community. For more information about Palaver Strings' specific Anti-Racism strategies please visit our website at www.palaverstrings.org

Program Description

Palaver Music Center

The Palaver Music Center (PMC) seeks to generate a love of music, foster creativity, and hold space for shared dialogue with people from diverse cultural and socioeconomic backgrounds.

A few years ago we noticed that our most profound musical experiences were happening beyond the concert hall - in hospitals, daycares, classrooms, restaurants, yoga studios. We realized more and more how fulfilling and inspiring it was to not only perform for our community but *with* our community. We felt the need to create something that was true to the meaning of our name - to hold space for dialogue and creativity through the power of music in a direct and personal way.

PMC offers Early Childhood Music classes, string lessons through our Introduction to Strings and After-School Strings programs, and songwriting projects such as the Lullaby Project and Lifesongs Project to Portland residents of all ages (depending on the program). To make these programs as accessible as possible, we offer financial aid and flexible income-based tuition, and present most of our programs at transit-accessible partner locations in downtown Portland.

After-School Strings

The After-School Strings Program is the core educational program of Palaver Strings and the Palaver Music Center and provides quality string education for young people interested in playing classical stringed instruments (violin, viola, cello and bass). Instruction is based largely on the Suzuki Method for the first few years. Students in the strings program receive private and small group instruction and an instrument. The program operates for 24 weeks and follows the academic calendar (October – May).

Programming takes place twice a week on Mondays and Wednesdays at Palaver's space (380 Cumberland Ave. Portland, ME). The program includes:

- Weekly private lessons (30-45 minutes)
- Weekly group classes (45 minutes)
- Instrument, bow and case

Students will have the opportunity to present what they have learned at two recitals throughout the year: one in December and a culminating recital in May.

Teacher & Staff Profiles



Iman Enan, Student & Family Coordinator

Iman Enan was born in Iraq and moved to Portland 9 years ago. She is working on her bachelor's degree in psychology and minoring in history. Her passion in life is to inspire young women to do their best in different areas and always get out of their comfort zone and experience life. However, her life purpose is to stand up for issues that she believes in and to contribute positively to her community. She wants to leave the world knowing that she made it a better place.

Maya French, violin & viola instructor

I grew up in midcoast Maine and was lucky to have a childhood full of outdoor adventure and lots of music. I've performed at Kronberg Academy, Conservatorium van Amsterdam, Orford Music Academy, Manchester Music Festival, Kneisel Hall, Virginia String Quartet Seminar, and Kinhaven Music School. I received my BM in Violin Performance from Boston University in 2015 under the direction of Bayla Keyes. I am currently a faculty member at the Palaver Music Center and am certified to teach Suzuki Violin as well as Music Learning Theory, an early childhood music method. When I co-founded Palaver Strings, I had many goals in mind, such as promoting social service, participating in a self-conducted ensemble, and playing new music, but most of all I wanted to connect with audiences in an honest and open environment. In addition to music, I love gardening, cooking large family-style meals, traveling, and the ocean.





Brianna Howard, Education Coordinator, violin & viola instructor

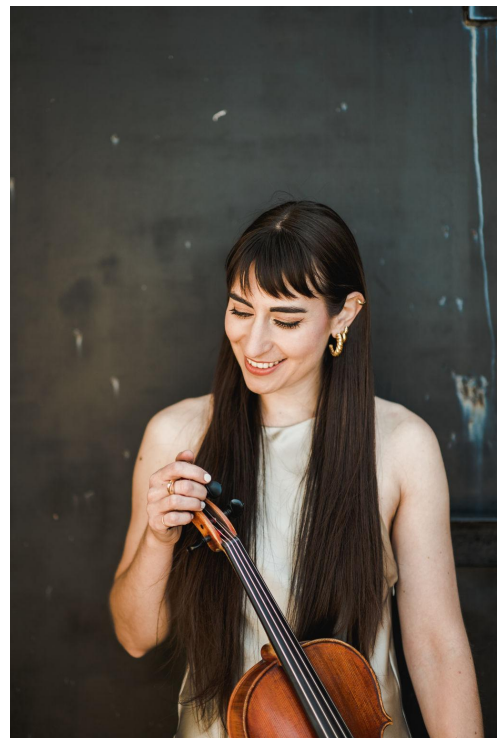
Brianna Howard holds a B.M. in violin performance from Boston University, where she studied with Bayla Keyes. She attended the Boston University Tanglewood Institute, Aspen Music Festival, National Orchestral Institute, Garth Newel Music Center, Three Bridges International Chamber Festival, and Kinhaven Music School.

Brianna has performed at The John F. Kennedy Center for the Performing Arts, Zankel Hall at Carnegie Hall, Avery Fisher Hall, and Woolsey Hall.

She has performed in masterclasses with Ani Kavafian and Pinchas Zukerman, and placed first in the University of Connecticut Chamber Music Competition with the Anellie String Trio.

Elizabeth Moore, violin & viola instructor

I grew up in midcoast Maine, surrounded by music at an early age. My violin studies began at six, but I have earlier memories of my father playing and calling for contra dances. Playing folk music, in chamber ensembles, and singing every chance I got, I developed my musical interests in a small yet supportive community. I went on to study viola performance at the UNC School of the Arts with Sheila Browne, and at BU College of Fine Arts with Karen Ritscher. Teaching and playing with Palaver over the years, I am inspired by my colleagues and students; I learn so much each year, and continually reexamine the ways in which I approach music and my role as a musician and educator in the world. In addition to my work with Palaver, I teach a private studio, and at the Portland Conservatory of Music.





Ana Ospina, cello instructor

Growing up in the Colombian Andes, I began my musical journey with Colombian folk guitar at the age of nine, and later, embraced the cello and classical music at the age of thirteen. I began my academic studies at the Tolima Conservatory, continuing at the University of Southern Mississippi, and William Carey University, earning a BA in music performance. Currently, I am pursuing a Master's degree in performance at Longy School of Music under cellist Christine Lamprea, a Sphinx Medal of Excellence recipient. Teaching at the Boston String Academy and Palaver Music Center and performing with ensembles like my string quartet and cello duo, brings me immense joy as I believe music unifies and enriches, shaping character and fostering community enjoyment.

Sylvia Schwartz, violin & viola instructor

Deeply inspired by the relationship between music, movement, and dance, violinist and teacher Sylvia Schwartz (M.Mus.) steadfastly believes that every child—every person—can learn, and makes it her business to meet each individual where they are on their journey of learning, discovery, and mastery. Sylvia is a vibrant performer in both modern and historical styles. The power of music to heal and to bring us together drives her to teach through the Suzuki method and to perform wherever she can, from the Scarborough COVID-19 vaccine clinic to Shostakovich Hall in St. Petersburg, Russia—and many places in between.





Matthew Smith, Managing Director of Education & cello instructor

Originally from the sun-saturated desert of Arizona, I have loved the power classical music holds for as long as I can remember. My first experiences with cello were through his school orchestra which showed me the importance of creating accessible musical opportunities for young people, and has shaped my role as a cellist and as Palaver's Managing Director of Education. As an educator, I have served as a Teaching Assistant at The Boston Conservatory, and as a Music Educator and Teaching Artist Fellow through the Massachusetts Cultural Council.

I have had the pleasure of working with Colin Carr, Gautier Capuçon, and Bernard Greenhouse and have studied chamber music with members of the St. Lawrence String Quartet and Brentano String Quartet. He received a Master of Music degree from The Boston Conservatory at Berklee, studying with Andrew Mark, and a Bachelor of Music degree from Arizona

State University, where he studied with Thomas Landschoot. Outside of Palaver, he performs in a duo with his long-term musical partner, pianist Pei Pei Song, where they are regular guest artists at the National Centre for the Performing Arts in Beijing, China.

Contact Information

Matthew Smith, Managing Director of Education & Cello Instructor

Email: matthew@palaverstrings.org

Phone: (480) 234-1841

Brianna Fischler, Education Coordinator & Violin/Viola Instructor

Email: brianna@palaverstrings.org

Phone: (203) 803-8053

Maya French, Violin/Viola Instructor

Email: maya@palaverstrings.org

Phone: (207) 930-5189

Elizabeth Moore, Viola/Violin Instructor

Email: elizabeth@palaverstrings.org

Phone: (207) 790-3108

Sylvia Schwartz, Violin Instructor

Email: sylvia@palaverstrings.org

Phone: (978) 697-2295

Ana Ospina, Cello Instructor

Email: ana@palaverstrings.org

Phone: (857) 540-3179

Iman Enan, Student & Family Coordinator

Email: iman@palaverstrings.org

Phone: (207) 274-1815

Student and Caregiver Expectations

Caregiver Expectations

1. **Attend Private Lesson and Group Classes**

Parent and Caregiver involvement is highly encouraged since it can play a large role in your child's musical development. We ask caregivers to attend each private lesson and group class with their child. Students feel most successful when they know that they have support at home. We want music learning to be a part of the entire family and know that when a student has an active and engaged parent/caregiver that they are much more likely to stick with it. As teachers, part of our work is to support you in this role as home practice partner, so please share any questions or concerns about practice with us as they arise.

If you are interested in learning an instrument alongside your child, please let your private teacher know and we will do our best to make it happen!

2. **Arrive On Time**

It is the responsibility of caregivers to bring students on time to class. A good rule to get in the habit of is to arrive at your class/lesson at least 5 minutes before it starts.

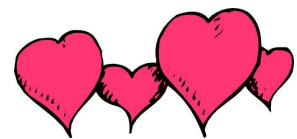


3. **Regular Practice at Home**

We recommend students practice as often as possible. Your child will learn faster and enjoy music more if they see that you are interested in hearing them play at home. Daily practice can mean many things from simply singing "Twinkle Twinkle Little Star" together to having them teach you how to hold the instrument or bow. Set aside a specific time each day to practice. It's all about consistency, repetition and most importantly - fun!

4. **Patience and Encouragement**

There will be moments when your child will not want to practice. Remember to celebrate every success - no matter how small. Your private lesson teacher is your best resource. They are there to guide you and your child along this journey - please reach out to them for practice or motivation tips.



We highly recommend reading the book *Helping Parents Practice* by Edmund Sprunger.

Student Expectations



1. **Respect**

We believe everyone deserves respect, and we believe it's important to demonstrate respect in all of our words and actions. Even when people have different viewpoints or ideas, it is important to always show our respect for each other.

2. **Attendance**

Attendance at private lessons and group classes is mandatory. If students have more than 3 unexcused absences (private lesson and/or group class) in one semester, parents/guardians will need to meet with the Managing Director of Education to discuss continued involvement in the program and steps to move forward.

Please help your child succeed by bringing them to class each week. Group classes work best if the entire group is present. This becomes even more important as children get older and begin playing in chamber groups (one instrument to a part). If one person is missing in the group, it diminishes the learning for those who are there.

Rescheduling Private Lessons

- Students are allowed to reschedule one (1) lesson per semester at a time that is mutually agreed upon by the teacher and student.
- Please inform your teacher no less than 24 hours prior to your lesson. In the event that the lesson can not be rescheduled or made-up, the **lesson fee will not be refunded**.
- Group classes will not be rescheduled or made up if a student is absent.

Due to the COVID-19 pandemic, we understand that unforeseen circumstances may affect attendance. Regular communication is the best option - **if you need to miss a class or private lesson due to illness please inform your teacher as soon as possible**. Absences due to illness will be excused however faculty are not responsible for making up lessons.

In the event that a student or teacher cannot attend his or her lesson due to illness an online lesson may be substituted for an in-person lesson. However, online private lessons should be the exception and only chosen when a student or teacher cannot meet in person.

Cancellations Due to Weather

Our program will follow in line with Portland Public Schools. In the event that classes are canceled due to weather, you will be notified by email as soon as possible. Note that Faculty members are not responsible for making up lessons missed due to inclement weather.

3. **Instrument Safety**

String instruments are very fragile and should be treated with care. Please help your child take care of their instrument by always keeping it in a safe place in the house. For a more comprehensive list of instrument care tips please see page 17 in the handbook.

4. **Regular Practice at Home**

We recommend students practice at least five times a week. Consistency is more important than minutes in one practice session. Find a space in the house where you can practice together. Establishing routines early on will help them see progress and sustain motivation. Consider leaving the instrument out of the case if there is a safe place for it, making it easier to get started practicing.

Class Dates

After-School Strings Class Dates 2023-2024

Orientation Monday, September 18 | 5:30pm-7:00pm

Week 1 Monday, October 2

Wednesday, October 4

Week 2 **NO CLASS MONDAY OCTOBER 9 (IP Day)**

Wednesday, October 11

Week 3 Monday, October 16

Wednesday, October 18

Week 4 Monday, October 23 (Make-Up for IP Day)

Wednesday, October 25 (Make-Up for December Recital Day)

Week 5 Monday, October 30

Wednesday, November 1

Week 6 Monday, November 6

Wednesday, November 8

Week 7 Monday, November 13

Wednesday, November 15

Week 8 Monday, November 20

Wednesday, November 22

Week 9 Monday, November 27

Wednesday, November 29

NO CLASS - December 4 & 6

Recital Week Monday, December 11

Wednesday, December 13

Winter Recital | Jewish Community Alliance

5:00pm - Students arrive for Dress Rehearsal

6:00pm - Recital Starts

NO CLASS December 13 - January 2 - Winter Break

Make-Up Week Wednesday, January 3 (Make-Up for MLK Jr. Day- Monday Schedule)

Week 10 Monday, January 8

Wednesday, January 10

Week 11 **NO CLASS MONDAY JANUARY 15 (MLK Jr. Day)**

Wednesday, January 17

Week 12 Monday, January 22

Wednesday, January 24

Week 13 Monday, January 29

Wednesday, January 31

Week 14 Monday, February 5

Wednesday, February 7

Week 15 Monday, February 12

Wednesday, February 14

NO CLASS February 19 & 21 - February Break

Week 16 Monday, February 26

Wednesday, February 28

Week 17 Monday, March 4

Wednesday, March 6

Week 18 Monday, March 11

Wednesday, March 13

NO CLASS MARCH 18 & 20 - Palaver Visions + Miracles

Week 19 Monday, March 25
Wednesday, March 27

Week 20 Monday, April 1
Wednesday, April 3

Week 21 Monday, April 8
Wednesday, April 10

NO CLASS April 15 & 17 - April Break
NO CLASS April 22 & 24 - Palaver x Attacca Rehearsals

Week 22 Monday, April 29
Wednesday, May 1

Week 23 Monday, May 6
Wednesday, May 8

Week 24 Monday, May 13
Wednesday, May 15

Make-Up/Recital Week

Monday, May 20
Wednesday, May 22

Thursday, May 23 - Spring Recital | Jewish Community Alliance
5:00pm - Students Arrive for dress rehearsal
6:00pm - Recital Starts

Instrument Care Tips

These tips are designed to help you properly care for your child's instrument as well as prevent any damage/issues from happening. A simpler version of these tips will be reviewed in your child's lesson and group classes.

Handling the Instrument :

1. Be mindful of surroundings: Be careful when entering rooms through doorways, as that is the most common place for instruments to get little chips or nicks when not handled correctly (especially in colder/drier weather).

2. Keep Away from Heaters and Windows: The instrument should remain at a stable temperature level as much as possible (not too hot or cold). Therefore, it is important to store an instrument away from a heater or a window. Keeping an instrument in either of these two places will likely cause cracks, loose pegs and/or open seams.

3. Avoid Car Trunks: Although it may seem like the most convenient place to put it, the instrument should never go in the trunk of the car. During the winter, the trunk is the coldest part of the car, even in transit. Furthermore, sliding around or even small bumps can cause minor damages to the instrument, such as small cracks, or cause the bridge to move. Instruments should also be taken inside with you, never left in the car.

4. CELLISTS: When not in use, do not lean a cello or bass (or its case) up against a wall or corner. It is much safer lying on its side on the floor near a wall. Passing people, shifting rugs, gusts of wind, etc... can knock over the case and damage the instrument. Furthermore, endpins should always be put back in the instrument when not in use. Avoid walking over a cello or bass, always walk around it.

The Instrument:

1. Bows: Always loosen your bow when putting it away (All students know this, most students forget to do it)! Students need to be EXTRA attentive when putting the bow away in the colder months. A bow left tightened over time makes it prone to warping, which greatly affects its playability. In the cold dry weather, the bow hair shrinks which leads to a higher possibility of the bow snapping.

(continued on other side) □

2. Slipping Pegs: It is very common that the pegs may slip out of tune from time to time. Unless you have been shown by your private teacher how to tune the pegs, you should not attempt to try re-tuning the pegs. Please ask your teacher for practice techniques if/when a string becomes loose, and wait until your next lesson or group class when someone can tune it for you.

3. Cracks/Open Seams: If you see a crack or open seam on the instrument, notify your teacher and Palaver staff immediately. While cracks can form at any time during the year, they are much more prone to growing quicker during the winter months because of the dry conditions. It is important to consistently check the instrument to make sure that no cracks are beginning to form and/or grow. A buzzing sound can indicate a crack or open seam.

General Care Review:

1. Treat it like your baby: Be sure to keep your instrument with you at all times - never leave it unattended (even for just a few minutes)— Think of it this way: If the instrument were a newborn baby, would it be ok to leave it unattended somewhere?

2. Cleaning Cloth: Take pride in your instrument by wiping off the rosin on the strings and the body of the instrument daily.

3. Bridge: Regularly take a look at the bridge, if you notice that it is beginning to warp or bend, please let your teacher or the Palaver staff know immediately so we can take care of it. The bridge may move/tilt slightly due to various reasons, but keeping a close eye on its position will allow us to put it back to its proper place.

4. Case: Always make sure that the case is properly latched and/or zipped up. While this may seem obvious, it is very common to not completely pack-up the instrument, especially when in a rush or distracted during the pack-up process.

5. REPAIRS: Never attempt home repairs. If something breaks, please contact Matt (matthewr@palaverstrings.org) or a Palaver Strings faculty member immediately.

6. Questions: If you have any questions about instrument care, instrument troubles, concerns, etc., please do not hesitate to ask either your teacher or a Palaver teacher at any time.

Each student is responsible for their own instrument. It is important for students to remember these practices, as the habits they develop now will be the same ones they'll use in the future when they purchase their own instruments.

Practice Tips

These tips are from Mary Bloom - the Director of Education at the Neighborhood Music School in New Haven, Connecticut. They can be used to help make practice more joyful and productive. If your son or daughter is having trouble practicing, be sure and reach out to your private lesson teacher for guidance.

1. Make Practice A Habit

For young students, the underlying reason for resisting practice is more likely to be related to the child having difficulty with transitions or not knowing exactly how to practice, than not being interested in their instrument. Parents often assume a child lacks interest when they protest practice time, but it is rarely true. Helping establish a routine at home is an important first step.

2. Children Are Natural Imitators

Kids love to imitate others, and are very good at it. Asking your child to show you how their teacher would want them to practice will likely result in a dramatic and silly display of some really good practice! Have fun with this magical stage!

3. Children Are Eager to Learn

To help keep this fire burning brightly, point out their accomplishments and praise their efforts. Their eagerness to please you, partnered with your support, sets the best tone for successful practice and creates a bond in your relationship.

4. Children Love Structure

Ask your teacher to outline your child's practice routine. This might include guidance on how to play the warm ups, and practice steps for working out new and review pieces. Young children will need your help to follow these steps, but with consistency will soon be able to tell you the steps to follow.

5. Children Feel Safe with Routine

With your child's input, establish a practice time for your child and stick with it. Some children practice in the morning before school, some immediately after dinner.

Tips for Parents

Provide Gentle Reminders

As children grow, it is natural for them to require less support from parents, but it is normal for them to need reminders to practice. Some parents have reported setting a timer with their child ten minutes before practice time helps ease the transition to practice.

Praise Effort

Instill the understanding that success is achieved not through talent, but consistent, strategic work. Celebrate slow practice, rhythmic work, following their practice outline on their own, sharing their music with friends and family, creating their own compositions, etc.



Communicate

Share insights about your child's home practice or new interests with your child's teacher. Maybe there are certain styles of music that your child is especially interested in, and these could potentially be explored with the teacher's guidance. Or maybe there are frustration points that your child is struggling with, which the teacher should know about.

Keep It Positive

Avoid keeping score of mistakes. It is much more useful to tally the many ways your child is playing musically and beautifully. Reinforce the positive by saying things like "I really like that piece" or "Can you play that one for me again? I really like it!"

Celebrate Success!

Celebrations can be as simple as sharing a high five and should be applied liberally! Even the simplest celebrations provide valuable opportunities to learn that hard work pays off.



Here are two quotes from two incredible educators. They have helped remind and refocus my attention in my own teaching and personal practice.

"Our aim needs to be the nurturing of children. The moment we rigidly convince ourselves, 'Education is what we're after,' we warp a child's development. First foster the heart, then help the child acquire ability. This is indeed nature's proper way." -Shinichi Suzuki, Nurtured by Love

"I don't think anyone can grow unless they are loved exactly as they are now, appreciated for what they are rather than what they will be." -Fred Rogers

Student Mentorship Program

This year, Palaver is excited to pair experienced string players in local Middle School, High School and College with students in our After-School Strings program to aid in practicing with them after school once a week on days outside of normal program hours at no additional cost.

If you would like to be paired with a Mentor please reach out to Managing Director of Education, Matthew Smith (matthew@palaverstrings.org) or Education Coordinator, Brianna Fischler (brianna@palaverstrings.org).

Palaver Strings Concert Calendar

As always PMC students and families can attend a Palaver Strings performance for free!

Below is a list of Palaver Strings concerts this year. Stay up to date with all of our events by following our [Facebook](#) and [Instagram](#) pages!

Please email Matt at matthew@palaverstrings.org at least 7 days before the concert to request free tickets

Beehive Chamber Series: Homeland | November 12, 2023 at Jewish Community Alliance

Homeland explores folk-inspired music by a diverse group of composers paying homage to their homelands: Carlos Guastavino (Argentina), Violetta Parra (Chile), Leos Janacek (Czech Republic), and Bela Bartok (Hungary). These pieces explore the essence of each composer's cultural-political landscape, using folk material from everyday life. Our journey concludes with Brahms' monumental *Trio in A Minor*, which he composed after visiting his friend clarinetist Richard Muhlfeld in Meiningen, Germany.

Las Presencias, No. 7 "Rosita Iglesias:" *Carlos Gustavino*

Pohádka for cello and piano: *Leos Janacek*

Selections from Duos for violin and cello: *Bela Bartok*

Selection of songs arranged for viola and cello: *Violetta Parra*

Trio in A Minor, Op. 114: *Johannes Brahms*

Palaver Strings + little house dance: *Noisefloor* | December 6 & 7, 2023 at State Theater

Noisefloor is a unique collaboration between Palaver Strings and the contemporary dance collective *little house dance*, presented by Portland Ovations and State Theatre. In this interdisciplinary performance, twelve musicians and seven dancers join forces, premiering a new composition by Courtney Swain written specifically for choreography by Heather Stewart. This project seamlessly integrates the media of music and dance, involving dancers in the composition process and including musicians in *little house's* movement language. *Noisefloor* plays with the subjectivity of human experience, including visual and auditory perception and the logic of dreams. Musicians and dancers will move throughout the stage and surrounding areas, expanding the audience's audiovisual field and guiding their attention through the use of mobile light sources attached to their bodies. *Noisefloor* is an immersive physical, visual, and musical experience.

Noisefloor: Courtney Swain

Beehive Chamber Series: Nightingale in a Tree | February 3, 2024 at One Longfellow Square

Palaver Strings welcomes Fredy Clue, a Nyckelharpa virtuoso, composer, and multi-instrumentalist from Sweden. Hailed as “a creator of remarkable experiences and a true innovator in the folk art space,” Clue has taken the traditional music scene by storm. Their music takes inspiration from the forests, oceans, birds, and animals alike. Joined by Maine’s own Jamie Oshima, we will premiere Fredy’s new arrangements for Nyckelharpa and strings. We pair Clue’s music with Philip Glass’s *Fourth String Quartet*. Written in memory of avant-garde artist Brian Buczak, this three-movement work combines undulating arpeggios, soaring melodies, and rich harmonies to create a deep-rooted, whole-body experience

Arrangements and compositions by **Fredy Clue**

String Quartet No. 4: Philip Glass

Visions + Miracles | March 23, 2024 in Mechanics Hall TIME TBD

This one-hour program brings together music that is transcendent in nature, drawing inspiration from dreams, medieval chant, renaissance polyphony, spirituality, and the power of silence. Anchored by Christopher Theofanidis’s otherworldly composition of the same name, *Visions and Miracles* takes us on a journey through the gentle sound worlds of Arvo Part, Max Richter, and Caroline Shaw, interspersed with excerpts of Mendelssohn’s Sinfonia No. 1. With mesmerizing harmonies and moments of joy, grief, and gentleness, *Visions and Miracles* is evocative and reflective, grounding and transcendent.

Summa for Strings: Arvo Pärt

Entr’acte: Caroline Shaw

Sinfonia No. 1: Felix Mendelssohn

Visions and Miracles: Christopher Theofanidis

On the Nature of Daylight: Max Richter

Fiddle Set: Maya French/Jamie Oshima

Between Us with Attacca Quartet | April 24th-27th, 2024, Portland, Maine

Palaver Strings joins forces with the Grammy award-winning Attacca Quartet for a unique collaborative performance. Selected musical works explore themes of togetherness and collective vision, in human communities, physical space, and the natural world. Caroline Shaw’s *Plan & Elevation* responds to the landscape of Dumbarton Oaks and ideas of space and proportion. Paul Wiancko’s *Only Ever Us* reflects on human connection, while *Under the Sea Wind*, co-composed by Dana Lyn and Kyle Sanna for Palaver Strings, explores the interconnectedness of marine ecosystems. The program concludes with Dvorak’s *Serenade for Strings*, an iconic staple of string chamber repertoire, featuring the combined forces of both ensembles.

Egos flos Campi a 7: Jacobus Clemens non Papa

Plan and Elevation: Caroline Shaw

Under the Sea Wind: Dana Lyn/Kyle Sanna

Only Ever Us: Paul Wiancko

Serenade for Strings: Antonin Dvorak

PALAVR STRINGS
After-School Strings Application

Student Last Name Student First Name Student Middle Initial

Gender Age Date of Birth

Street City

Islander

Zip

Race/Ethnicity (check all that apply)

- Asian
- Indigenous American or Native Alaskan
- Black or African American
- Native Hawaiian or Other Pacific

- White
- Other: _____

Parent(s) or Guardian(s) Names

Home Telephone Cell/Work Telephone E-mail

School (if applicable) Town Grade

Mission Statement:

The Palaver Music Center strives to generate a mutual love of music, foster creativity, and hold space for shared dialogue with people from diverse cultural and socioeconomic backgrounds.

Tuition: Tuition is based on a sliding scale model meaning that the program cost is dependent on yearly house-hold income and family-size. You can find the sliding scale attached. Please write the total tuition amount you qualify for based on the sliding scale: _____

Financial Aid

Palaver is committed to ensuring that any student wishing to participate in the program can. If you feel the sliding scale fee is not affordable you may apply for financial aid. Applications can be found on our website at www.palaverstrings.org/afterschoolstrings. You may also email Matthew Smith at matthew@palaverstrings.org for an application.

Parent's Statement of Commitment:

I would like my child to apply to the After-School Strings class. I have read and understand the After-School Strings description. I also understand that if accepted I will keep Palaver updated with any changes in the above information.

Parent/Guardian Signature

Date

PALAVER STRINGS

After-School Strings Program

2023 MEDIA RELEASE AGREEMENT BETWEEN PALAVER STRINGS, STUDENTS AND CAREGIVERS

Student Name: _____

Photographs, recordings, video and film images

- The parent/guardian grants Palaver Strings permission to photograph, film, videotape, and record the student at any lessons, classes and/or performances. Palaver Strings has the parent/guardian permission to use all images and sound recordings for publicity and to describe and illustrate the program to the public, print & online media, and funding organizations.
- In the event that the parent/guardian does not wish to have the student's image and/or audiovisual media online, they may inform the Managing Director of Education via email (matthew@palaverstrings.org) at any time. Palaver Strings agrees to remove any media of the student from its website and social media platforms within 7 days of written notification. However, if the parent/guardian wishes to have the student's media removed after it has already been posted online, Palaver Strings does not take responsibility for media that was shared or downloaded by third parties.

Do you give permission for Palaver Strings to share media on its own platforms ie. social media, website etc. ?
YES NO

Do you give permission for Palaver Strings to share media to third parties? YES NO

I understand and agree with the policies outlined in the above paragraph.

Signature _____ Date: _____

Palaver Music Center After-School Strings Program

What is the After-School Strings program?

The Palaver Music Center (PMC) After-School Strings Program strives to generate a love of music, foster creativity, and hold space for shared dialogue with young people from diverse cultural and socioeconomic backgrounds. It is designed to provide quality string education for all young people interested in playing a classical stringed instrument (violin, viola, cello and bass).

The program includes: 1 private lesson, and 1 group class a week for 24 weeks throughout the school year (October-May). The program also includes: a string instrument, recital opportunities for all students, free tickets to Palaver Strings performances and complimentary tickets to other Portland-area concerts.

How do I use this chart?

1. In the top row, find your family size or how many people live in your home.
2. Look down that column until you find the dollar amount that best describes how much your family or household earns per year.
3. Look to the left of that dollar amount to find the tuition and percent (%) of full tuition that is associated with (or closest to) your family income.

	Persons In Household	2	3	4	5	6	7
100% of tuition	\$2,250 or \$281.25/month	\$74,400	\$83,700	\$93,000	\$100,440	\$107,880	\$115,320
80% of tuition	\$1,800 or \$225/month	\$59,550	\$67,000	\$74,400	\$80,400	\$86,350	\$92,300
60% of tuition	\$1,350 or \$168.75/month	\$44,640	\$50,220	\$55,800	\$60,264	\$64,728	\$69,192
50% of tuition	\$1,125 or \$140.50/month	\$37,200	\$41,850	\$46,500	\$50,250	\$53,950	\$57,700
30% of tuition	\$675 or \$84.25/month	\$22,350	\$25,150	\$27,900	\$30,170	\$34,590	\$39,010
20% of tuition	\$450 or \$56.25/month	\$14,880	\$16,740	\$18,600	\$20,088	\$21,576	\$23,064
10% of tuition	\$225 \$28/month	\$7,440	\$8,370	\$9,300	\$10,044	\$10,788	\$11,532

Income Limits based on HUD Area Median Income for Portland, Maine 2019

<https://www.portlandmaine.gov/2371/Portland-Area-Median-Income>

What are the pieces that add up to the full tuition of \$2,250?

- Private Lessons (24) – \$1,225
- Group Class (24) – \$500
- Instrument Rental (12 months) - \$225
- Administrative Costs - \$300

Other program activities include the annual Palaver Music Center recital and other outside performances scheduled throughout the year

Is there financial aid available?

Yes, if you find that the tuition amount associated with your income is not affordable, please apply for scholarship through our Financial Aid process. Please email Managing Director of Education, Matthew Smith at matthew@palaverstrings.org or Education Coordinator, Brianna Fischler at brianna@palaverstrings.org for a Financial Aid application or more information.

Financial Aid Application Due – September 18, 2023

When is tuition due for the program?

Tuition for the entire year is divided into two equal payments.

1st Payment Due – September 18, 2023

2nd Payment Due - January 29, 2024

Palaver Strings is committed to ensuring that every child who wants to participate can. If you would like to pay through a payment plan please fill out a Financial Aid application and contact Matthew Smith at matthew@palaverstrings.org.

Palaver Music Center
Programa extracurricular de instrumento de cordas

O que é o programa?

O Programa extracurricular de instrumento de cordas do Palaver Music Center (PMC) esforça-se para gerar amor à música, fomentar a criatividade e manter espaço para o diálogo compartilhado com jovens de diversas origens culturais e socioeconômicas. Ele é projetado para fornecer treinamento em instrumento de cordas de qualidade para todos os jovens interessados em tocar um instrumentos clássicos como o violino, a viola, o violoncelo e o baixo.

O programa inclui: 1 aula particular, 1 aula em grupo e 1 hora de prática supervisionada por semana durante 24 semanas durante todo o ano letivo (outubro-maio). O programa também inclui: 1. uma locação de instrumentos de corda totalmente segurada através da Johnson String Instruments por 12 meses; 2. oportunidades de recital para todos os alunos; 3. ingressos gratuitos para todas as apresentações do Palaver Strings, e 4. ingressos para outros concertos na área de Portland.

Como eu uso este gráfico?

1. Na linha superior, encontre o tamanho de sua família ou quantas pessoas moram em sua casa.
2. Olhe para baixo nessa coluna até encontrar o valor em dólar que melhor descreve o quanto sua família ou residência ganha por ano.
3. Olhe para a esquerda desse valor em dólar para encontrar a taxa de matrícula e o percentual (%) de ensino integral associado (ou próximo a) sua renda familiar

	Pessoas na residência	2	3	4	5	6	7
100% da mensalidade	\$2,250 o \$250/mês	\$74,400	\$83,700	\$93,000	\$100,440	\$107,880	\$115,320
80% da mensalidade	\$1,800 o \$200/mês	\$59,550	\$67,000	\$74,400	\$80,400	\$86,350	\$92,300
60% da mensalidade	\$1,350 o \$168.75/mês	\$44,640	\$50,220	\$55,800	\$60,264	\$64,728	\$69,192
50% da mensalidade	\$1,125 o \$140.50/mês	\$37,200	\$41,850	\$46,500	\$50,250	\$53,950	\$57,700
30% da mensalidade	\$675 o \$84.25/mês	\$22,350	\$25,150	\$27,900	\$30,170	\$34,590	\$39,010
20% da mensalidade	\$450 o \$56.25/mês	\$14,880	\$16,740	\$18,600	\$20,088	\$21,576	\$23,064
10% da mensalidade	\$225 o \$28/mês	\$7,440	\$8,370	\$9,300	\$10,044	\$10,788	\$11,532

Limites de renda com base na renda média da região do “HUD” para Portland, Maine 2019
<https://www.portlandmaine.gov/2371/Portland-Area-Median-Income>

Quais são as partes que somam o total de \$ 2,250?

- Aulas particulares (24) - US \$ 1.225
- Aulas de grupo (24) - \$ 500
- Aluguel de instrumentos (12 meses) - US \$ 225
- Custos administrativos - US \$ 300

Outras atividades do programa incluem o recital anual do Palaver Music Center e outras apresentações externas programadas durante todo o ano.

Existe ajuda financeira disponível?

Sim, se você achar que o valor da mensalidade associado à sua renda não é acessível, solicite bolsa de estudos através do nosso processo de Auxílio Financeiro. Por favor, envie um email para Managing Director of Education, Matthew Smith através do endereço de e-mail matthew@palaverstringsl.org para uma solicitação de ajuda financeira ou mais informações.

Solicitação de auxílio financeiro deve ser entregue até a data: 18/9/2023

Quando a mensalidade deve ser paga ao programa?

1º pagamento devido - 18/9/2023

2º pagamento devido - 29/1/2024

A Palaver Strings está empenhada em garantir que toda criança que queira participar possa de fato participar. Se você gostaria de pagar através de um plano de pagamento, por favor preencha uma solicitação de ajuda financeira e contate Matthew Smith no endereço de e-mail matthew@palaverstrings.org.

Palaver Music Center
Programme d'Instruments à Corde Extrascolaire

Quel est le programme "After-School Strings" (Instruments à Corde Extrascolaire)?

Le Programme d'Instruments à Corde Extrascolaire de Palaver Music Center (PMC) s'efforce d'engendrer un amour de la musique, encourager la créativité et offrir un espace pour le dialogue partagé aux jeunes venant des milieux culturels et socio-économiques divers. Il est conçu pour fournir un apprentissage de qualité à tous les jeunes intéressés à jouer un instrument à cordes classique (le violon, l'alto, le violoncelle et la basse).

Le programme inclut : 1 leçon privée, 1 classe en groupe et 1 heure de pratique supervisée par semaine pour 24 semaines tout au long de l'année scolaire (Octobre-Mai). Le programme inclut aussi : 1) une location d'un instrument à corde complètement assurée par Johnson Strings Instruments pour une période de 12 mois, 2) des occasions de récital pour tous les étudiants, 3) des billets gratuits à toutes les spectacles de Palaver Strings et 4) des billets complémentaires à d'autres concerts dans la région du Portland (Orchestre de Symphonie de Portland).

Comment utiliser ce graphique?

1. Dans la rangée du haut, trouvez la taille de votre famille ou combien de gens vivent dans votre maison.
2. Regardez en bas de la colonne jusqu'à ce que vous trouviez la quantité en dollar qui décrit le mieux combien votre famille ou maisonnée gagnent par an.
3. Regardez à gauche de cette quantité de dollar pour trouver les cours et le pourcentage (%) de des frais totaux scolaires associé à (ou le plus proche à) votre revenu de famille.

	Pessoas na residência	2	3	4	5	6	7
100% des frais	\$2,250 or \$281.25/month	\$74,400	\$83,700	\$93,000	\$100,440	\$107,880	\$115,320
80% des frais	\$1,800 or \$225/month	\$59,550	\$67,000	\$74,400	\$80,400	\$86,350	\$92,300
60% des frais	\$1,350 or \$168.75/month	\$44,640	\$50,220	\$55,800	\$60,264	\$64,728	\$69,192
50% des frais	\$1,125 or \$140.50/month	\$37,200	\$41,850	\$46,500	\$50,250	\$53,950	\$57,700
30% des frais	\$675 or \$84.25/month	\$22,350	\$25,150	\$27,900	\$30,170	\$34,590	\$39,010
20% des frais	\$450 or \$56.25/month	\$14,880	\$16,740	\$18,600	\$20,088	\$21,576	\$23,064
10% des frais	\$225 \$28/month	\$7,440	\$8,370	\$9,300	\$10,044	\$10,788	\$11,532

Limites de revenu basées sur le Revenu médian de région HUD pour Portland, Maine 2019

<https://www.portlandmaine.gov/2371/Portland-Area-Median-Income>

Quels sont les parties qui s'ajoutent jusqu'aux frais totaux de scolarité cours de \$2,250 ?

- Leçons privées (25) – \$1,225
- Classe en groupe (25) – \$500
- Location d'instrument (12 mois) - \$225
- Coûts administratifs - \$300

Les autres activités du programme incluent le récital annuel de Palaver Music Center et d'autres spectacles extérieurs programmés tout au long de l'année

Est-ce que l'aide financière est-elle disponible ?

Oui, si vous constatez que la quantité de cours associée à votre revenu n'est pas abordable, s'il vous plaît demandez une bourse par le biais de notre processus d'Aide financière. Vous pouvez envoyer un email à Matthew Smith, Directeur chargé de l'Éducation, matthew@palaverstringsl.org pour une application d'Aide financière ou plus de renseignements.

L' application pour l'aide financière est due – le 18 septembre 2023

Quand est-ce que les frais scolaires seront-ils dus pour le programme ?

Les cours pour l'année entière sont divisés en deux paiements égaux :

1er paiement dû - October 2, 2023

2ème paiement dû - January 29, 2024

Palaver Strings se consacrent à garantir que chaque enfant qui veut participer peut participer. Si vous voudriez payer en utilisant un plan de paiement, remplissez s'il vous plaît une application d'Aide financière et contactez Matthew Smith à matthew@palaverstringsl.org.

palaver music center

After-School Strings Financial Aid Form

The application and supporting documents are due: September 18, 2023

Please mail or email to:
Matthew Smith, Managing Director of Education
380 Cumberland Ave.
Portland, Maine 04101
email: matthew@palaverstringsl.org

Student Name: _____

Address: _____

Home phone: _____ Cell-phone: _____

Work _____ Email: _____

Palaver's education programs operate on a sliding-scale tuition model meaning that the program cost is dependent on yearly house-hold income and family size. Please be sure and consult our Sliding Scale (back) prior to filling out this application. If you find that the tuition amount is not affordable please complete the remainder of this form.

Please complete the following steps:

- Application for Financial Aid and Financial Information Form (on the back of this page).
- Include a brief letter stating why you need financial assistance; including any information that you think will be helpful when determining the amount.
- Based on my most recent completed tax return, my gross annual income was _____ last year.
- Has COVID-19 drastically affected your family's financial situation? **Yes or No (circle one)**
- Has one or more persons in your household filed for unemployment in the past 24 months? **Yes or No (circle one)**
- Fill in the following statement: **"According to the Sliding Scale (on back) my tuition cost is \$_____ per month I can afford to pay \$_____ per month."**

Name of Mother/ Father / Guardian: _____

Occupation: _____

Employer: _____

Name of Mother / Father / Guardian: _____

Occupation: _____

Employer: _____

Name of Mother/ Father/ Guadian _____

Occupation: _____

Employer: _____

Signature of Parent/Guardian

Date

(continued on back)

palaver music center

2023 Financial Information Form

In order to understand your overall financial situation and to better evaluate your needs, we are asking for some additional financial data.

(If you have more than one child in the program, there is no need to send duplicate supporting documentation, but please use separate application forms for each child.)

Student Name(s): _____

What is the total amount of untaxed income that you receive each month?

<i>Type of untaxed income</i>	<i>Amount</i>
Do you receive child support? How much per month?	
Do you receive money from Government Assistance programs? If so, how much per month?	

Do any of your children qualify for a free or subsidized lunch program?	YES	NO
Do you qualify for a Section 8 voucher?	YES	NO

Sliding Scale Tuition Model

	Persons In Household	2	3	4	5	6	7
100% of tuition	\$2,250 or \$281.25/month	\$74,400	\$83,700	\$93,000	\$100,440	\$107,880	\$115,320
80% of tuition	\$1,800 or \$225/month	\$59,550	\$67,000	\$74,400	\$80,400	\$86,350	\$92,300
60% of tuition	\$1,350 or \$168.75/month	\$44,640	\$50,220	\$55,800	\$60,264	\$64,728	\$69,192
50% of tuition	\$1,125 or \$140.50/month	\$37,200	\$41,850	\$46,500	\$50,250	\$53,950	\$57,700
30% of tuition	\$675 or \$84.25/month	\$22,350	\$25,150	\$27,900	\$30,170	\$34,590	\$39,010
20% of tuition	\$450 or \$56.25/month	\$14,880	\$16,740	\$18,600	\$20,088	\$21,576	\$23,064
10% of tuition	\$225 \$28/month	\$7,440	\$8,370	\$9,300	\$10,044	\$10,788	\$11,532

Income Limits based on HUD Area Median Income for Portland, Maine 2019

<https://www.portlandmaine.gov/2371/Portland-Area-Median-Income>